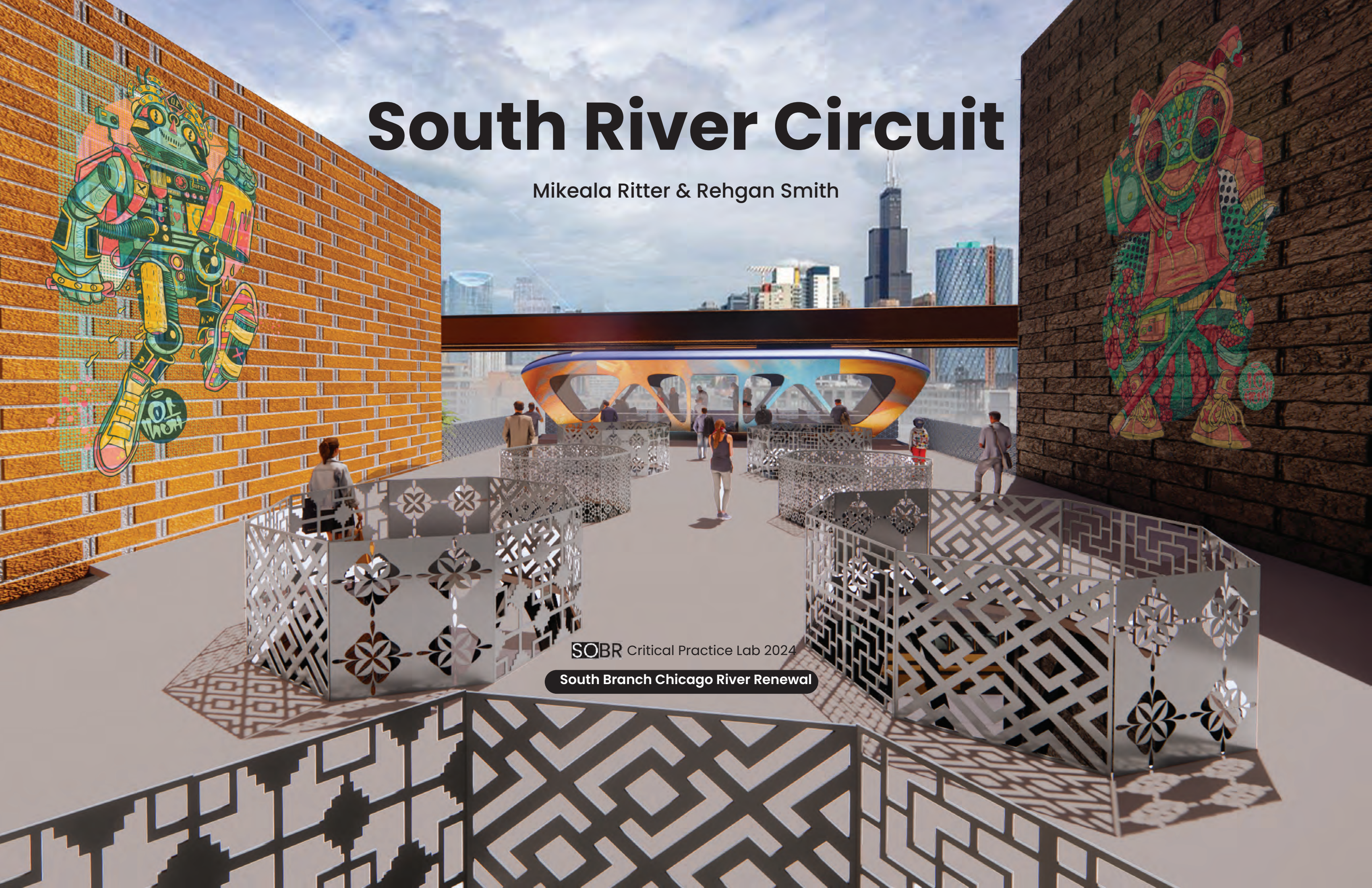


South River Circuit

Mikeala Ritter & Rehgan Smith



SOBR Critical Practice Lab 2024

South Branch Chicago River Renewal

Project Narrative

Objectives and Performance Criteria



Thesis

The South River Circuit is an inverted monorail system proposed to operate throughout Pilsen, Bridgeport, and the riverfront development and revitalization projects, connecting local residents and guests to existing infrastructure and amenities. The SRC aims to bridge communities and infill transit gaps, promoting connection to local commerce, opportunity for social engagement, and space for cultural articulation while safely and efficiently transporting riders.

Performance Criteria

- 1: Introduce pedestrian accessible transit on a community level to bridge the surrounding neighborhoods
- 2: Expand and nurture access to diverse economic, social, and cultural experience

Project Narrative

- 1: Bridge Industry
- 2: Link to nature
- 3: Community Interface
- 4: Commercial convergence
- 5: Local color
- 6: Cultural artifacts
- 7: Stylistic Articulation
- 8: Mobile commons
- 9: social exchange

Existing Conditions

Performance Criteria



Connectivity

The existing transit systems in the areas come in the forms of bus stops, and the elevated train system. The bus stops are frequent and our team would like to incorporate them into our stations as to encourage the usage of public transit over person vehicles in the city. The elevated train stations do not serve the pilsen/ bridgeport area, and our team aims to serve the area in preparation for the new coming city growth.



Expression

Currently, the communities within our area of intervention all have walls covered in art, but not many places that are kept up. Our teams aims to create space, and pay local artists to have a well kept exhibit that allows for locals to feel connected and respected through their surroundings.

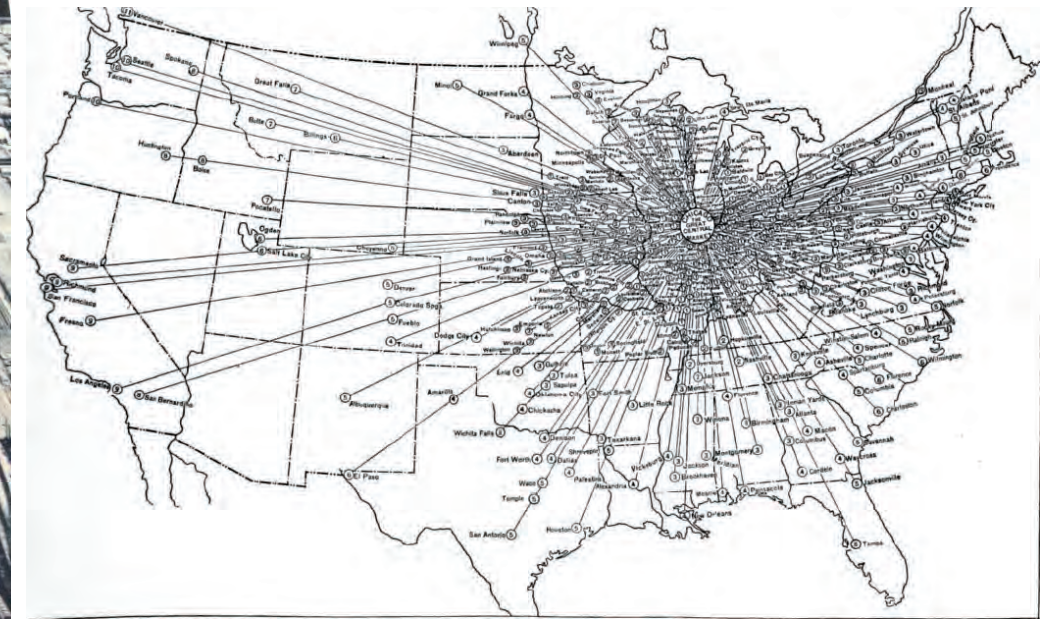


Cultivation

Our team aims to allow for the areas to have better overlap of commerce and movement between the communities. through this we hope to create spontaneous social interactions. Our team aims for a more united social and cultural experience within the area.

Chicago's Transit History

Chicago as heart of American rail networks: 1836-Present



Chicago Surface Lines (streetcars): 1913-1947



South River Circuit

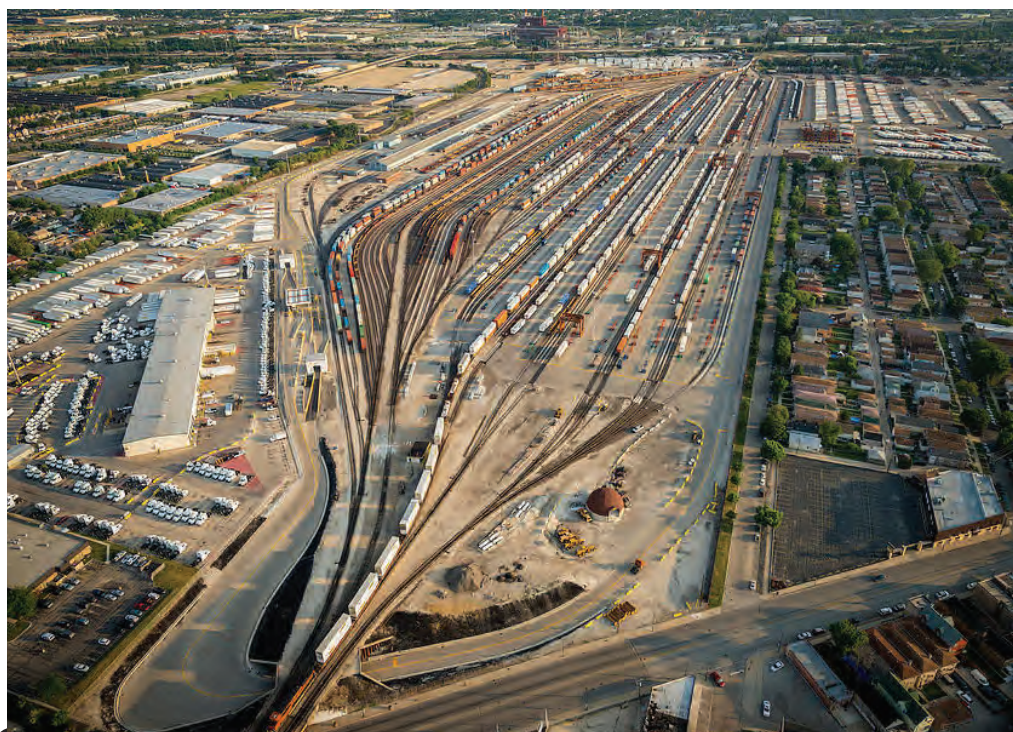


Chicago's Transit Today

Public Transit Trains: Subways and L system



Current freight yards and Passenger Trains



South River Circuit

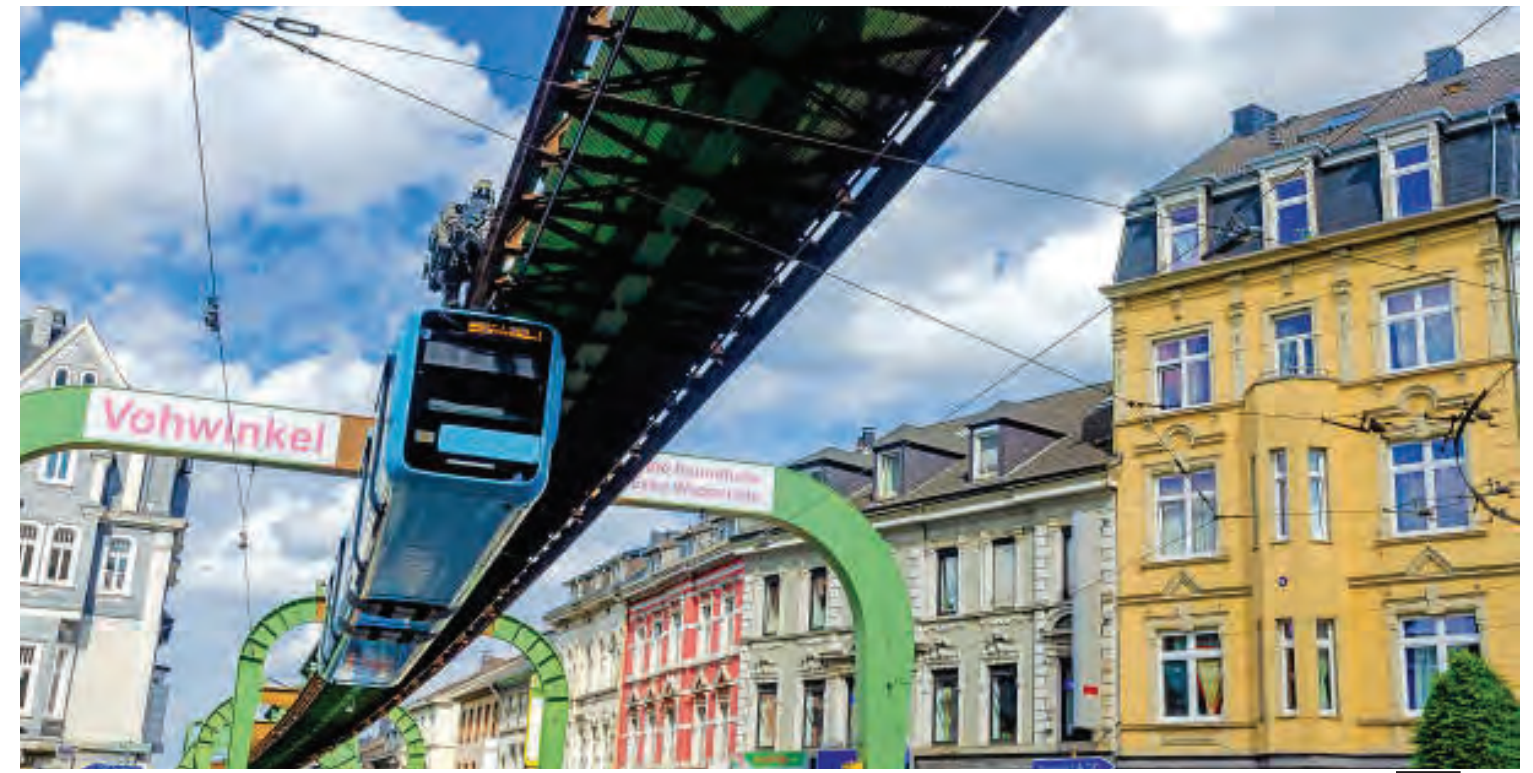
Precedent Studies

Station and Train Inspiration



Precedent Studies

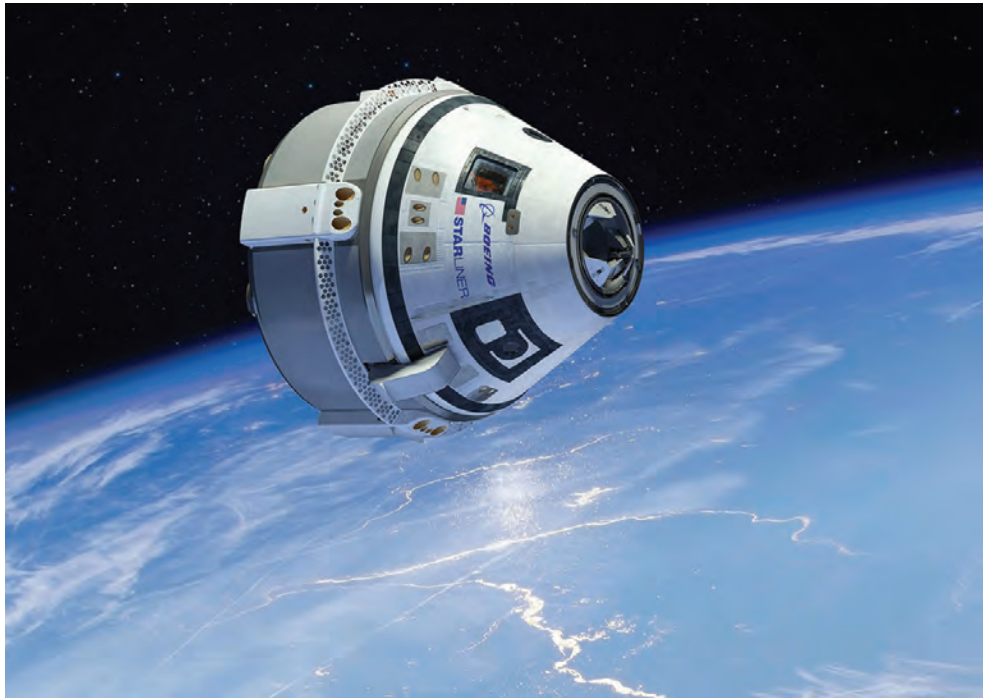
Schwebebahn



Concept

Key Words of Design

07



Capsule

N. – A small case or container, especially a round or cylindrical one

N. – An enclosing membrane or sheath, a surrounding cover

'Capsule' from Latin 'Capsula' : a small container

By keeping **capsule** in mind while we design, we capture the essence of what it means to be within a designated space but still feel comfortable.



Frame

N. – A rigid structure that surrounds or encloses something such as a door or window.

N. – A single complete picture in a series forming a film

N. – The extents of a view

V. – To create or formulate a view, concept, plan, or system.

V. – To place in a particular context

'Frame' from Germanic old English 'framian' :

Prepare to use

Using **frame** as a way to manufacture tone, trigger emotional responses to allow riders to have a fun and an enjoyable ride through the newly revitalized neighborhood.



Movement

N. – The act of changing physical location or position from one place to another

N. – A change or development

N. – Membership to an alliance or organization dedicated to change

'Movement' from Latin 'movere' and Medieval Latin 'movimentum' : to move

Using **movement** as a way to emphasize the difference between dynamic and static, allowing riders to feel as though they are watching the world go by in a static state

Concept

Key Words of Design

08



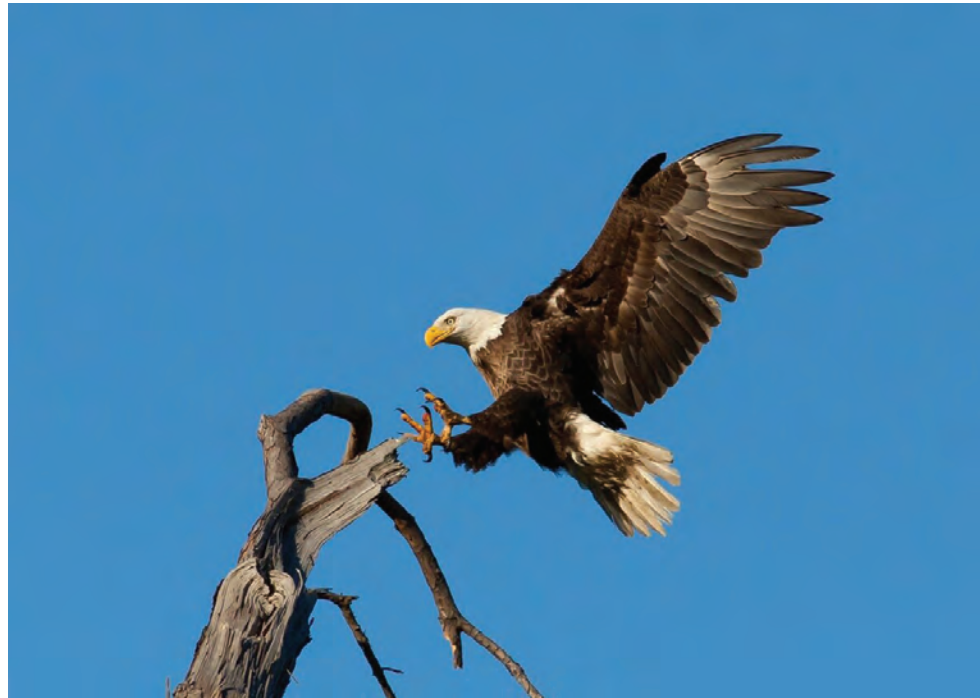
Portal

N. – A doorway, gate, or other entrance, especially a large or imposing one

N. – An access to pass through between two places, realities, or worlds

From Latin “porta” : door or gate

By keeping **portal** in mind we are going to make it feel like you’re stepping from one reality into another by making each stop unique using site context as well as stop specific local artists



Perch

N. – A place where someone or something rests or sits, especially a place that is high or precarious.

N. – A thing on which a bird alights or roost typically a branch or horizontal rod

V. – To sit or rest on something high, narrow, or to rest on the edge of something.

‘Perch’ from Latin ‘pertica’ : pole or measuring rod, then through old French and English to mean linear rod, stick, or pole.

We are going to use **perch** as a way to introduce an element of play with heights and implement itreague at both upper and lower spaces at each station.



Traverse

V. – Travel across or through.

V. – To move back, fourth, or sideways.

‘Traverse’ from Late Latin ‘traversare’ and Old French ‘travers’ : movement performed in dressage, in which horses move parallel to the side of the arena.

By implementing the idea of **traversing** through the city, we are going to explore the vertical aspect and design the rail in a way that will allow riders to experience the city in new and interesting ways along the route

User Profile



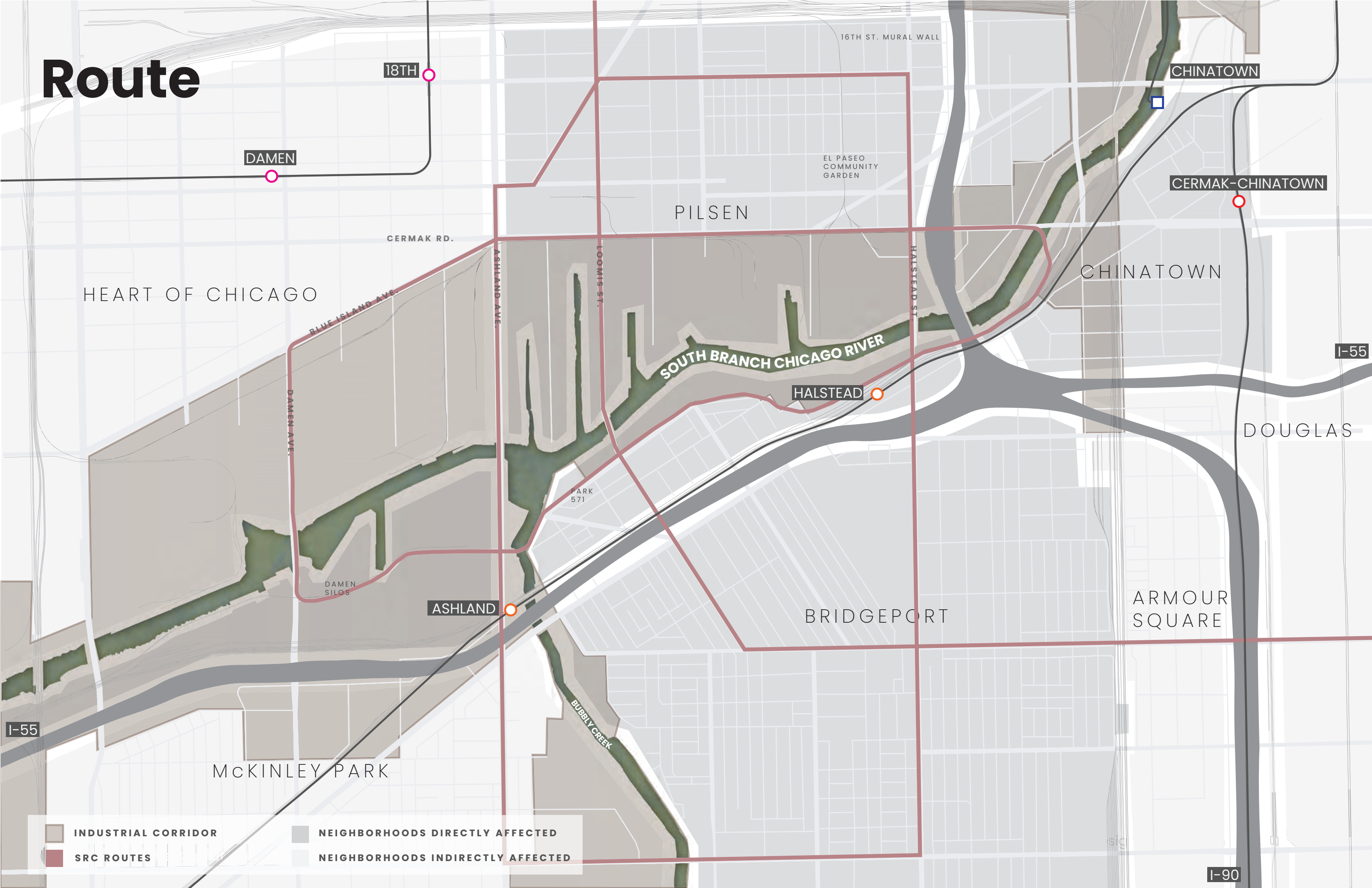
PUBLIC

Commuters | Shoppers | Disabled | Families | Visitors | Car-Free | Retirees | Students



System Admin | Operators | Maintenance Crews

Route



18TH

DAMEN

CERMAK RD.

HEART OF CHICAGO

BLUE ISLAND AVE.
DAMEN AVE.

ASHLAND AVE.

LOOMIS ST.

PILSEN

16TH ST. MURAL WALL

EL PASEO
COMMUNITY
GARDEN

SOUTH BRANCH CHICAGO RIVER

HALSTEAD

CHINATOWN

CERMAK-CHINATOWN

CHINATOWN

I-55

DOUGLAS

PARK
571

DAMEN
SILOS

ASHLAND

BRIDGEPORT

ARMOUR
SQUARE

I-55

MCKINLEY PARK

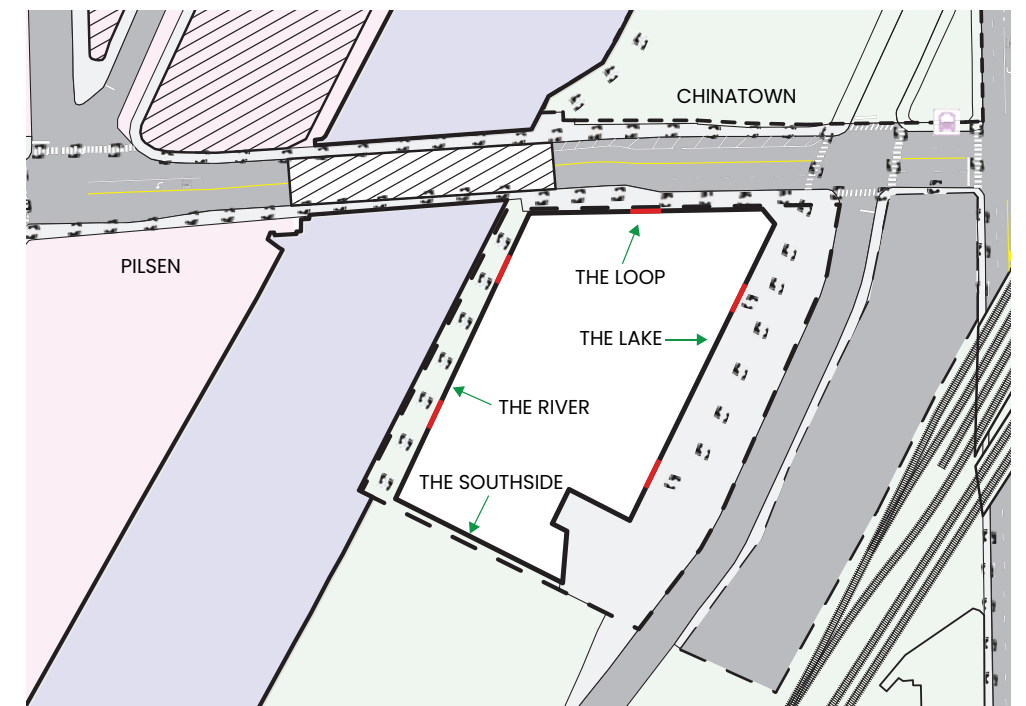
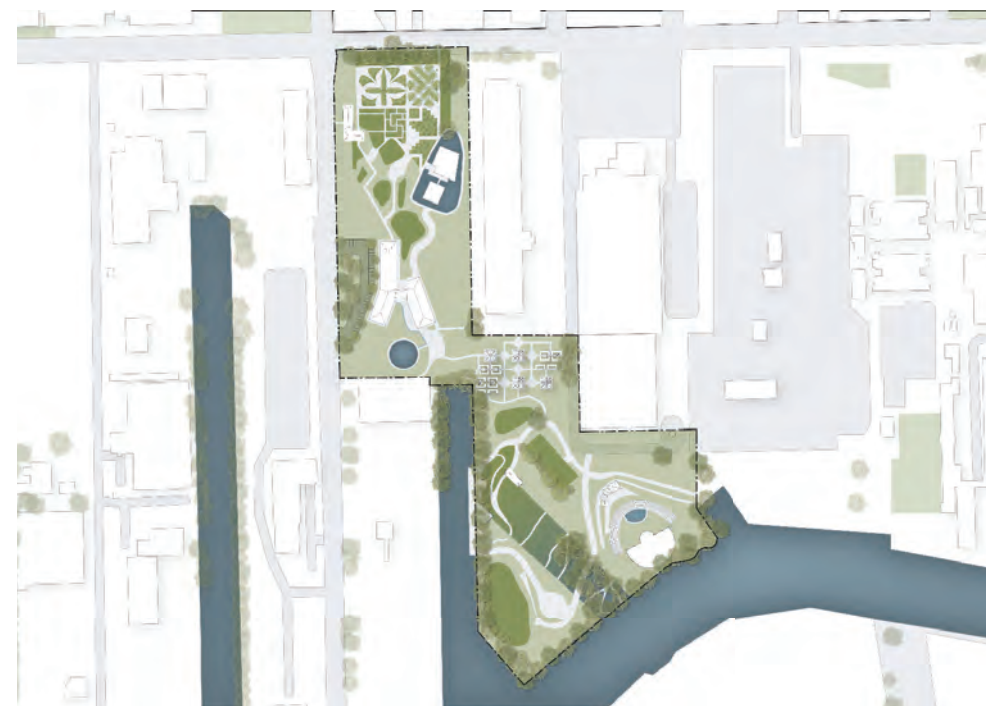
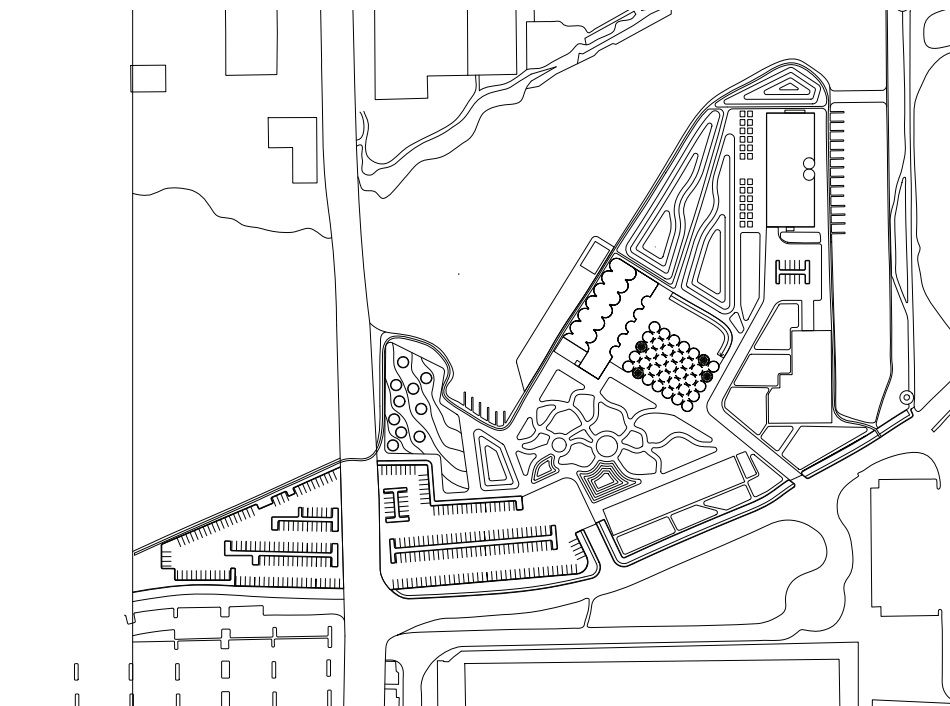
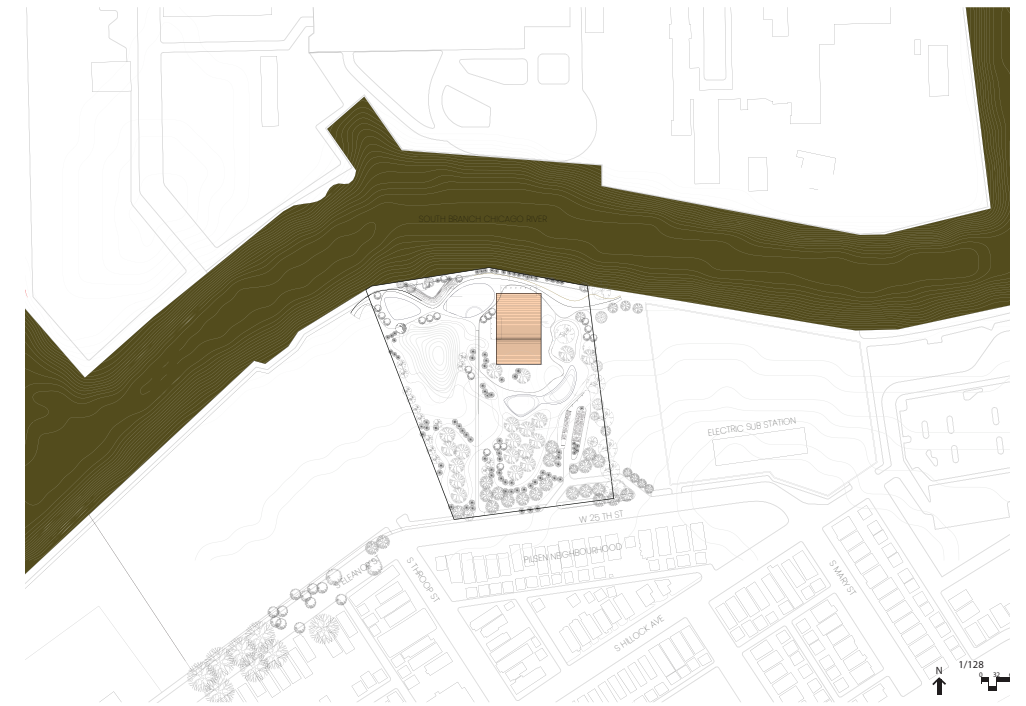
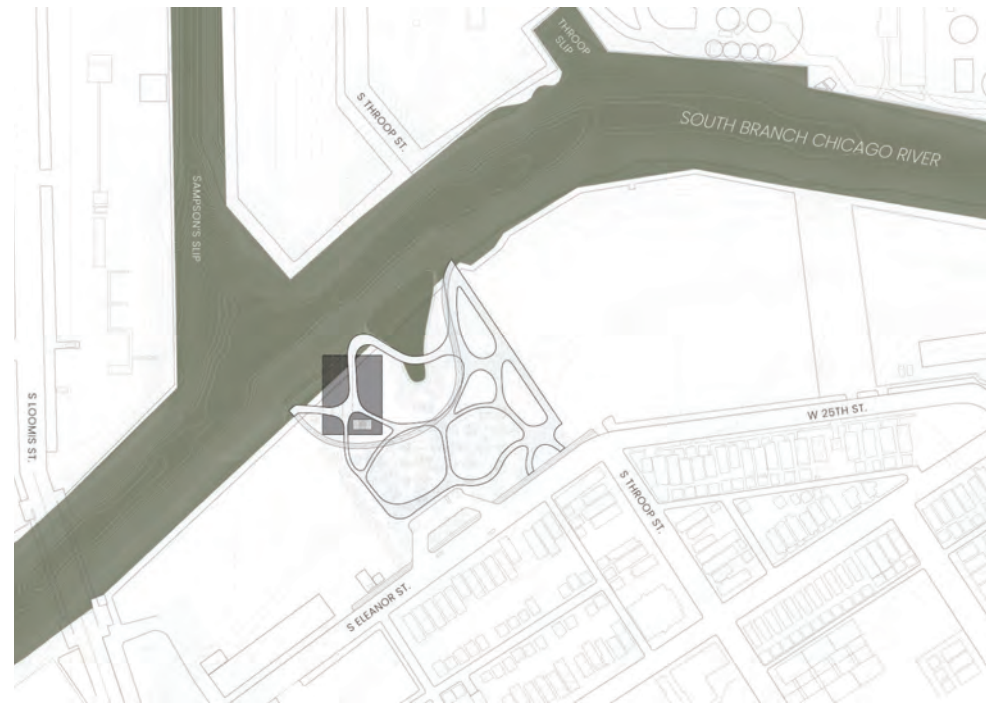
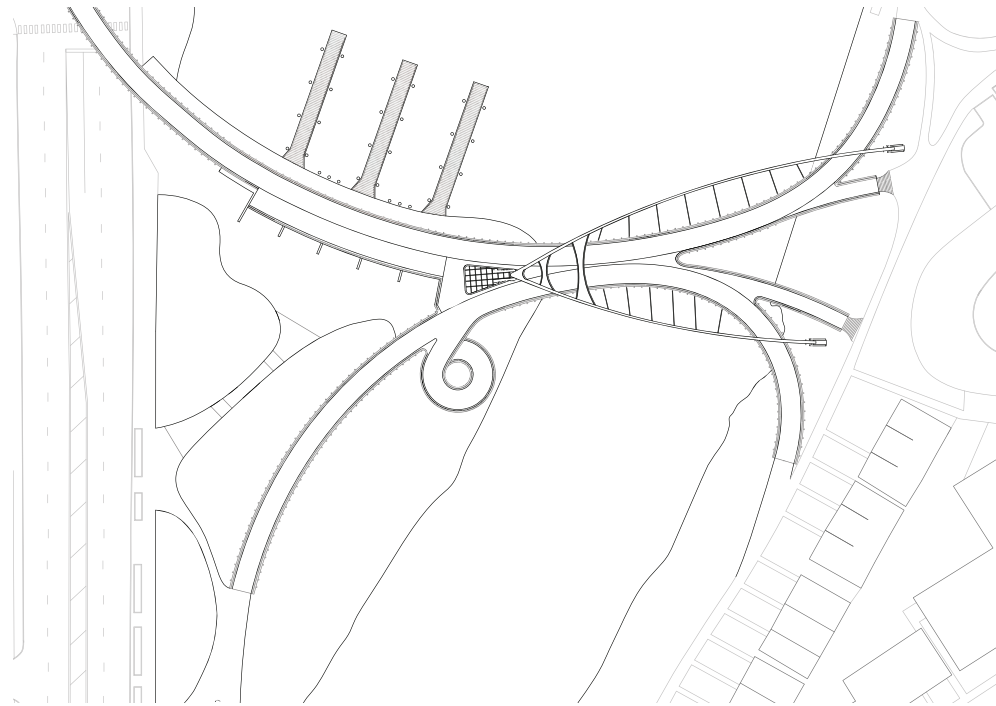
BUBBLY CREEK

- INDUSTRIAL CORRIDOR
- NEIGHBORHOODS DIRECTLY AFFECTED
- SRC ROUTES
- NEIGHBORHOODS INDIRECTLY AFFECTED

I-90

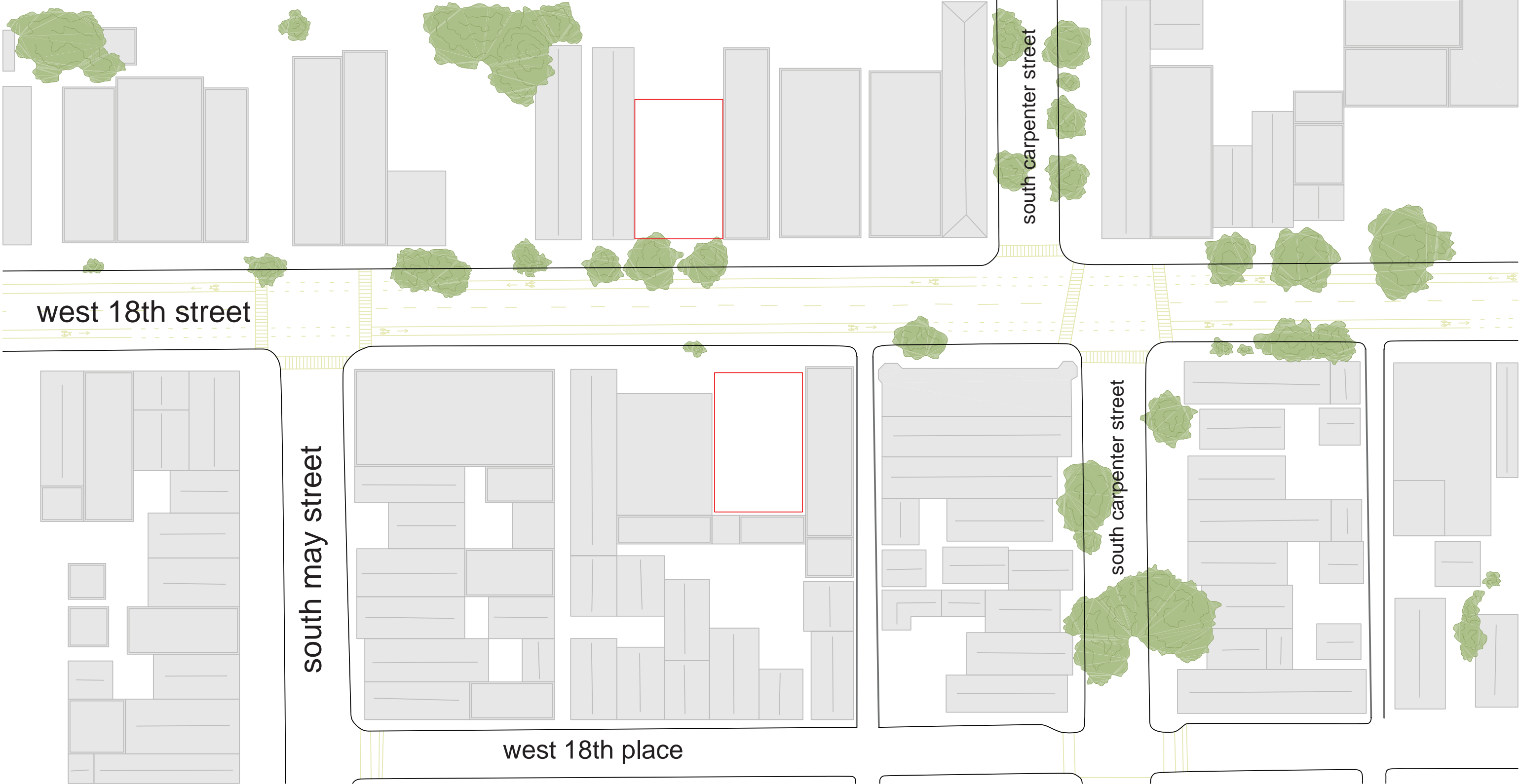
Route Reasoning

Component Project



Street Plan : 18th

Project Design



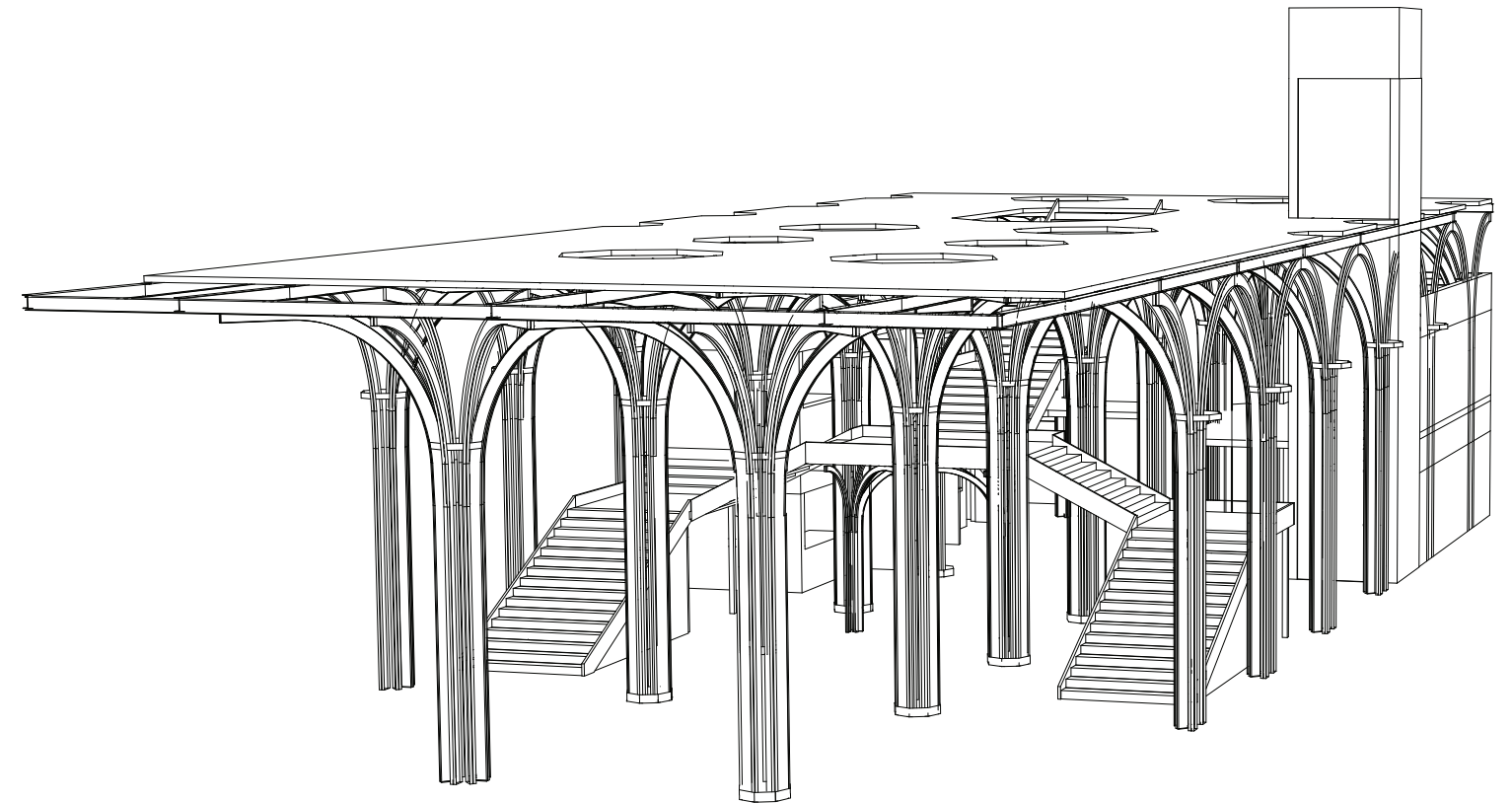
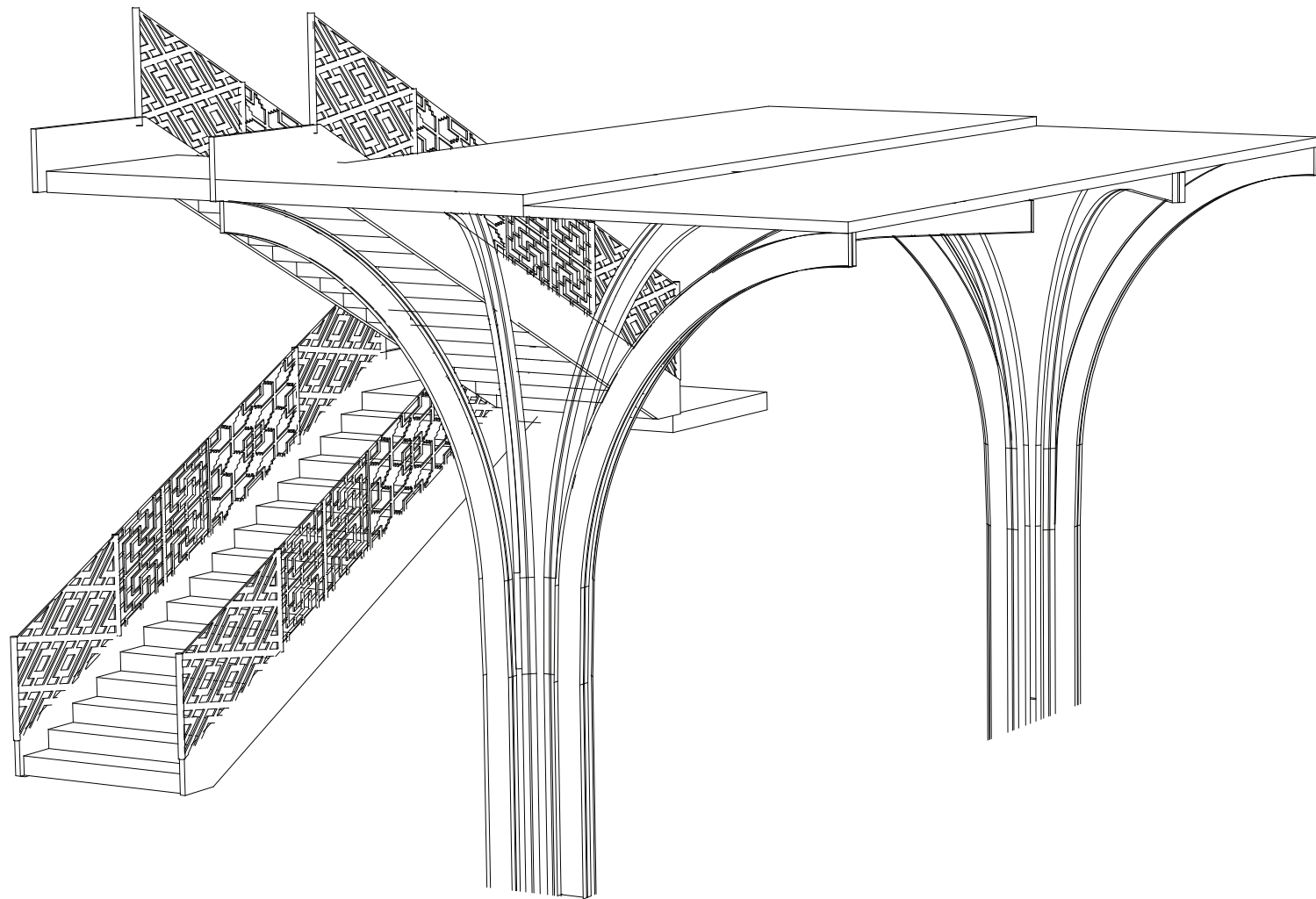
Street Photos : 18th





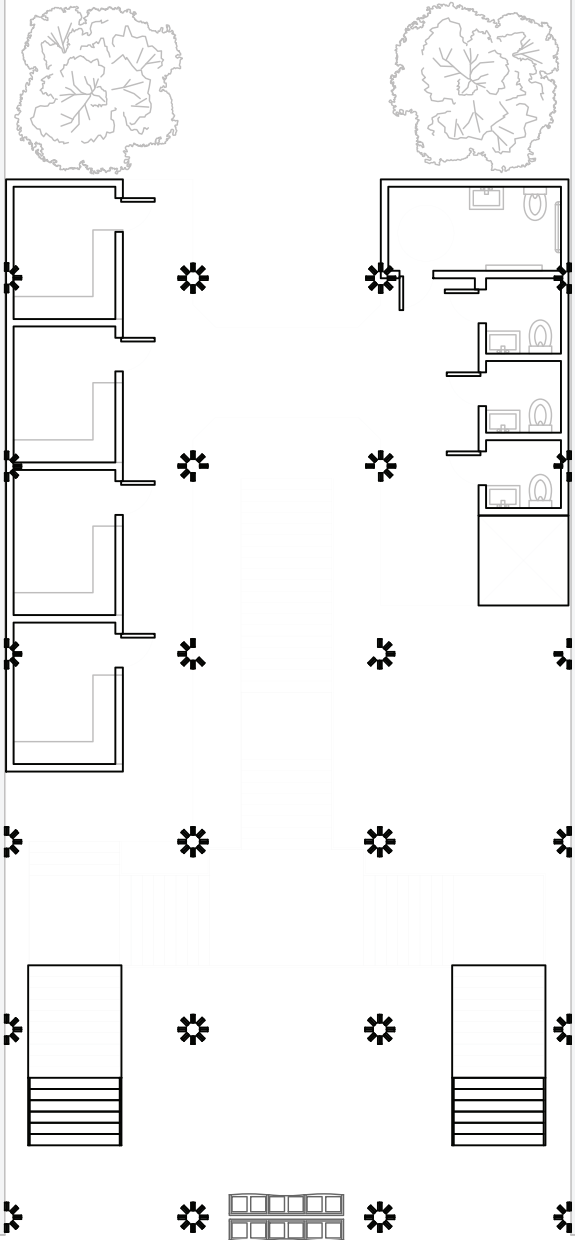
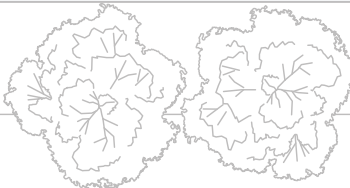
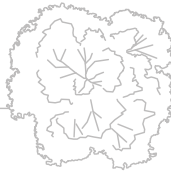
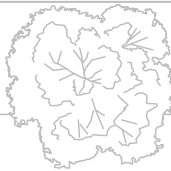
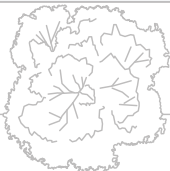
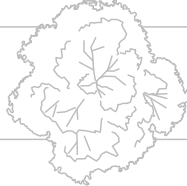
Station Typologies

Mini And Full Size Station



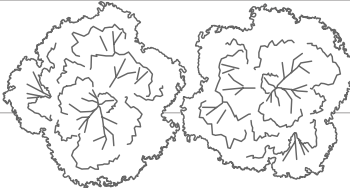
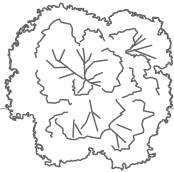
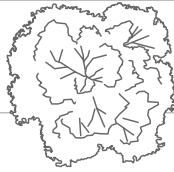
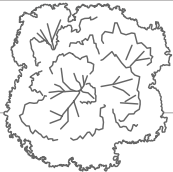
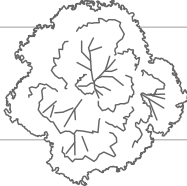
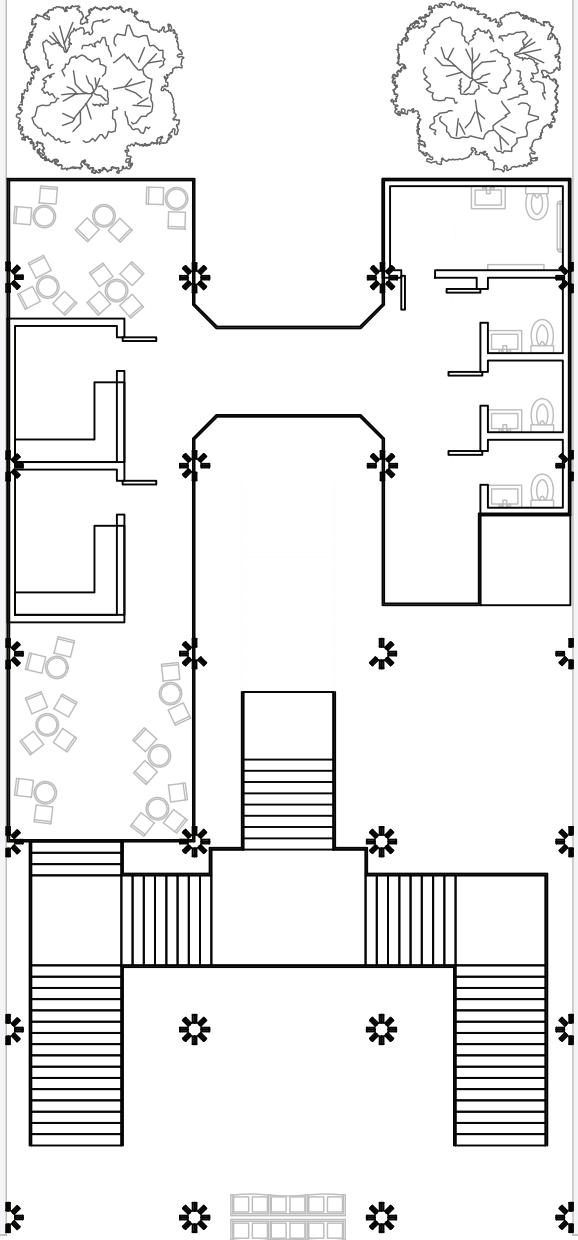
Station Plans

Floor One



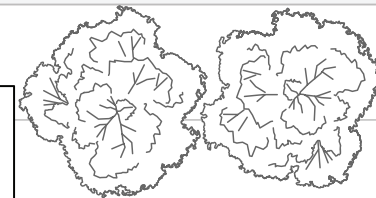
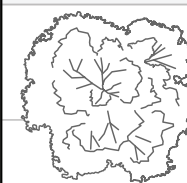
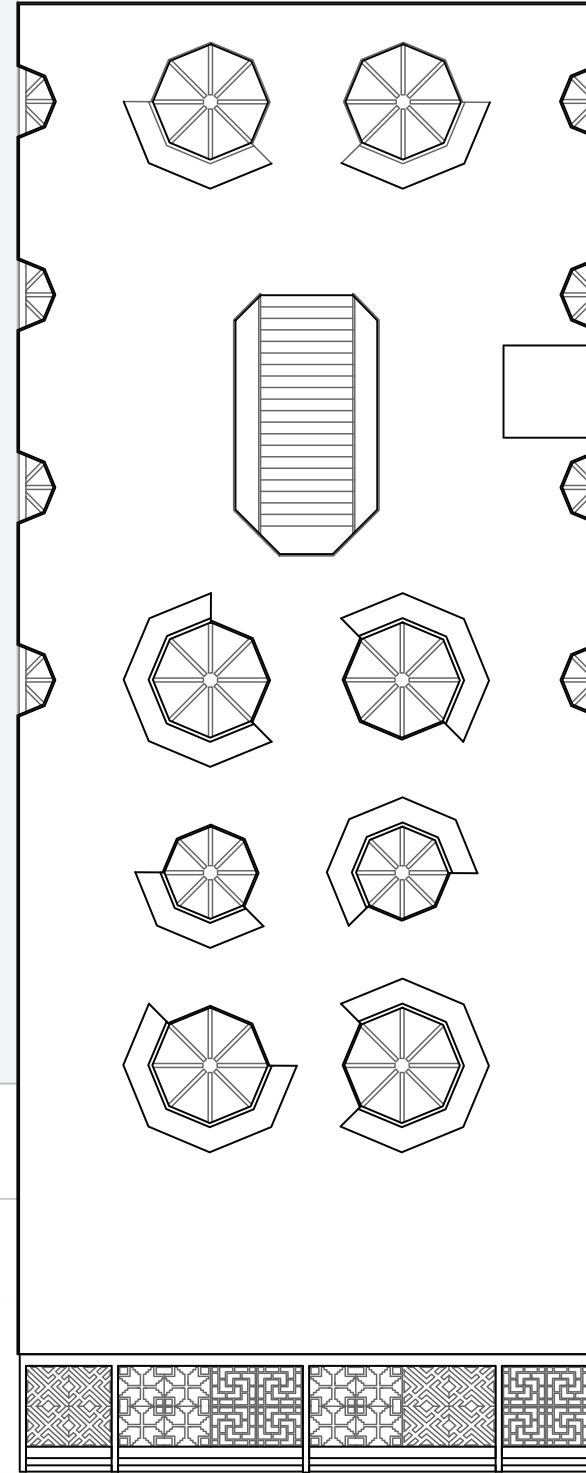
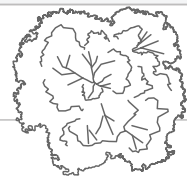
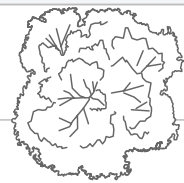
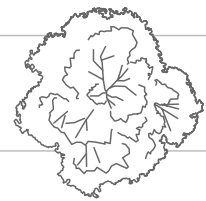
Station Plans

Floor Two



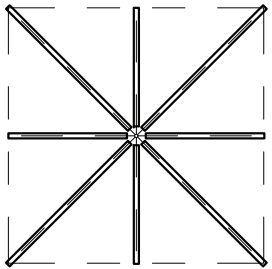
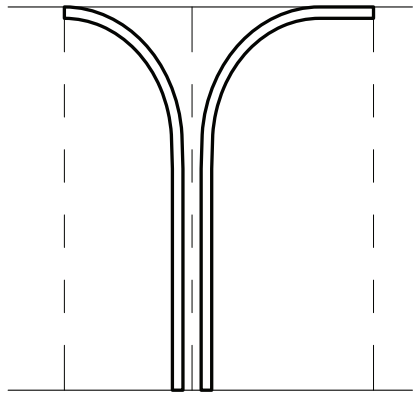
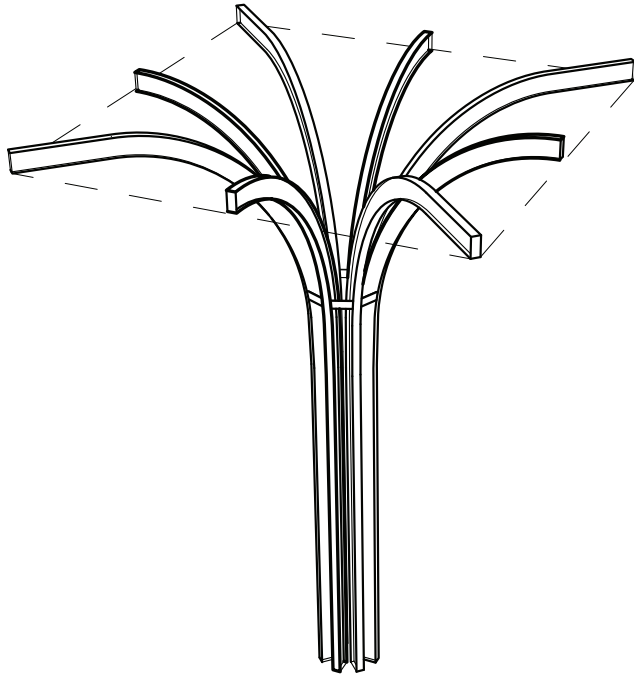
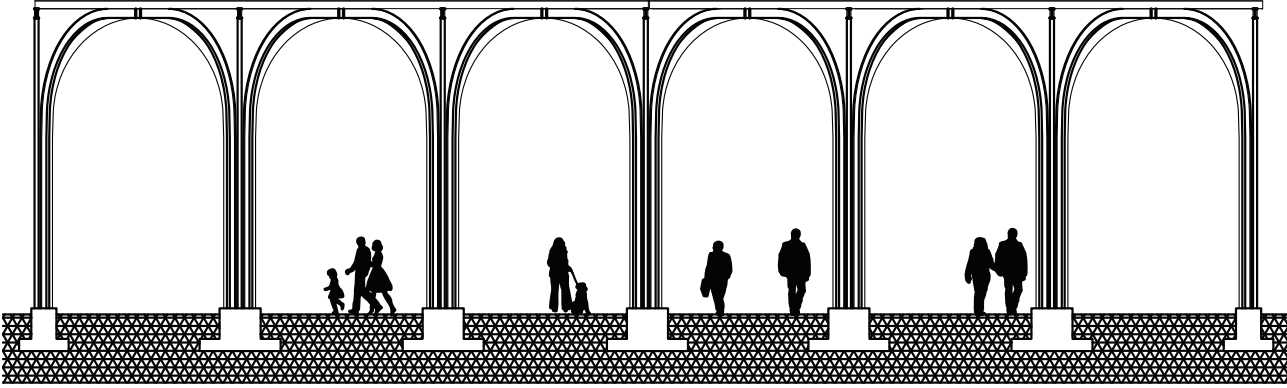
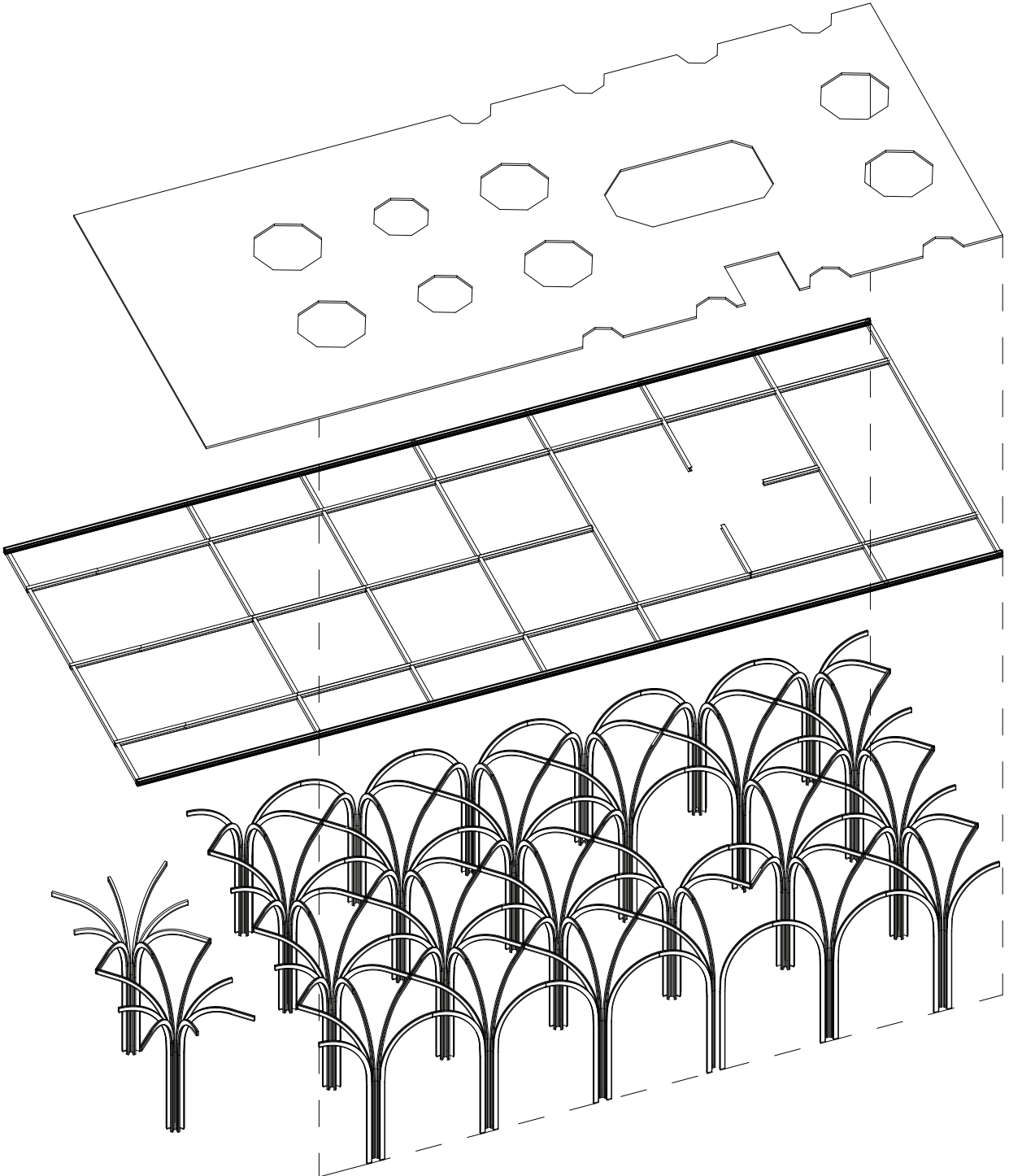
Station Plans

Floor Three

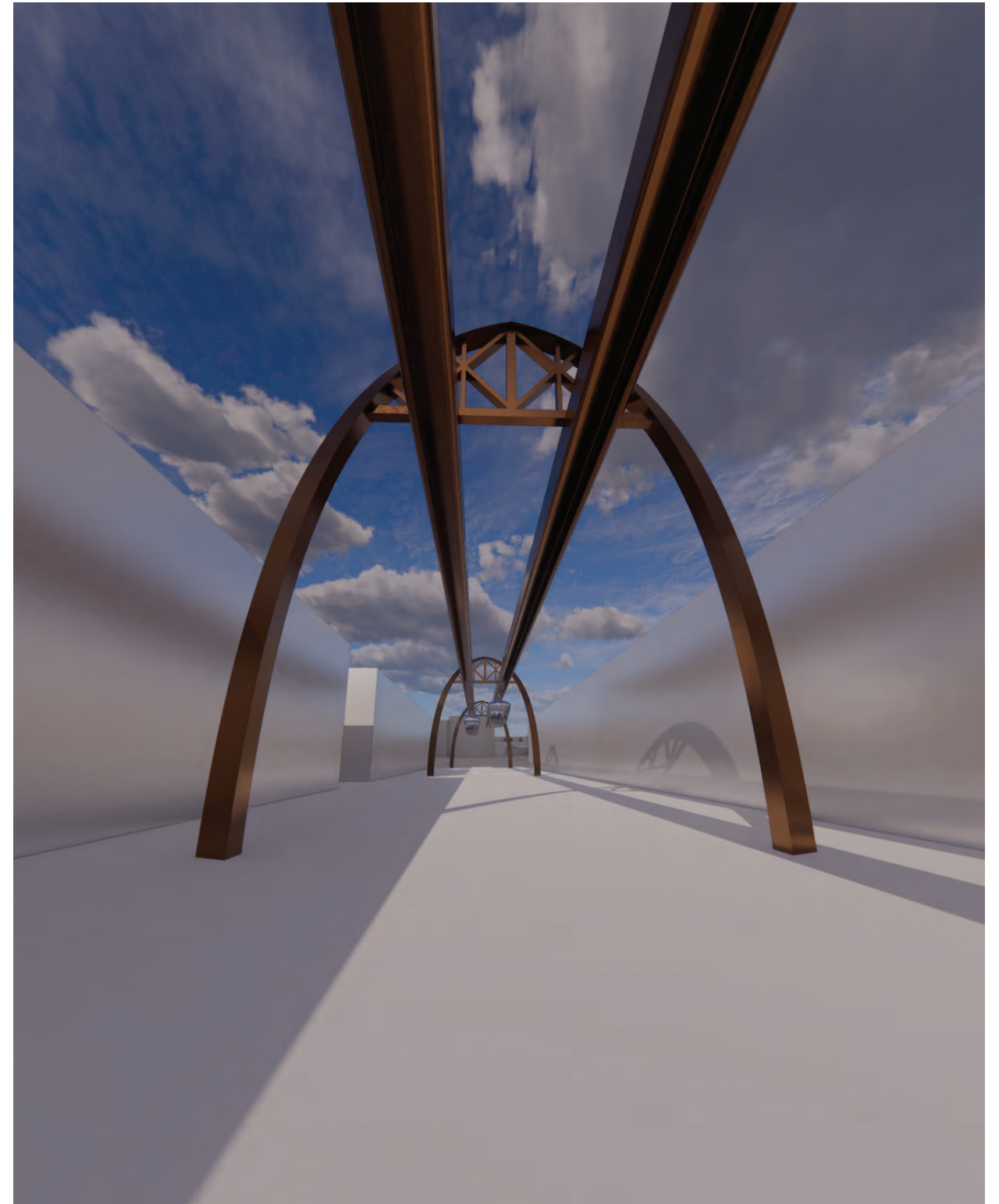
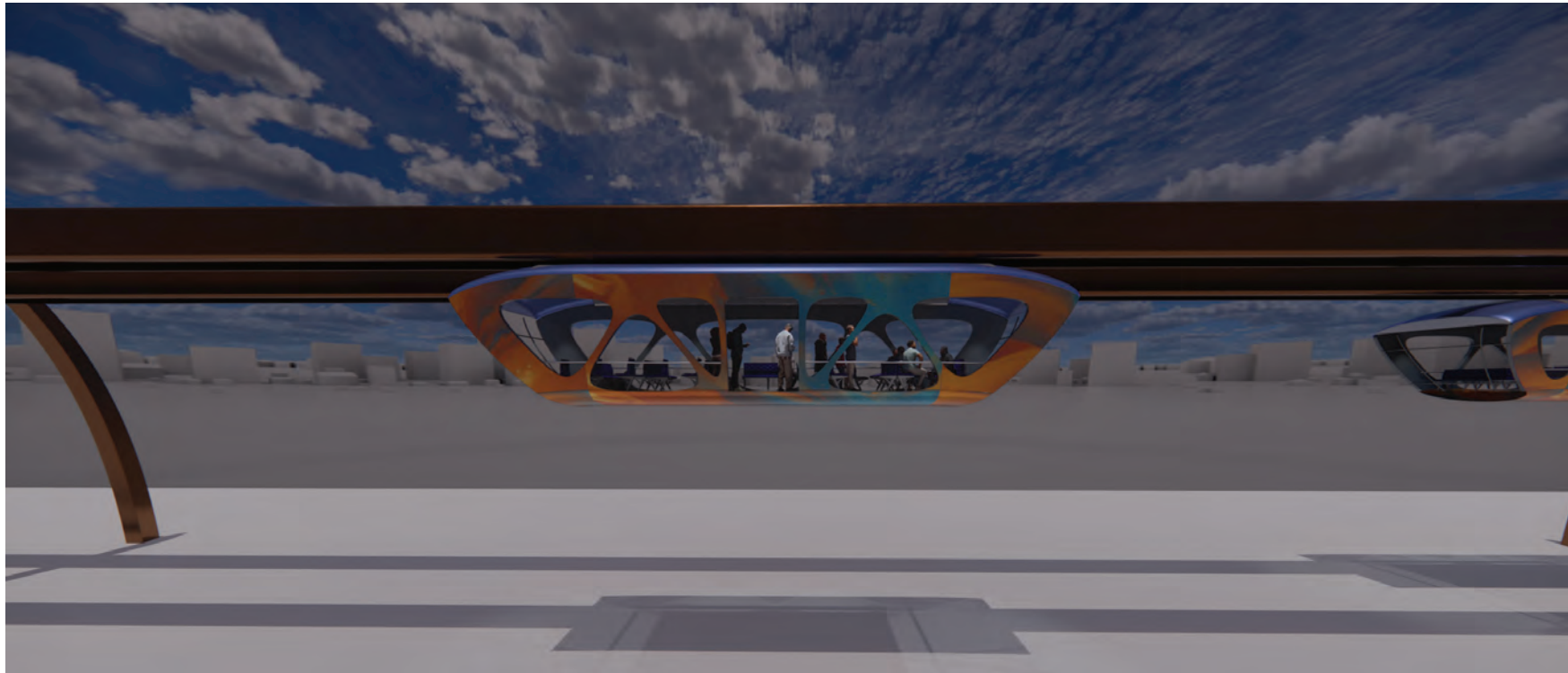


Station Structure Diagrams

Project Design

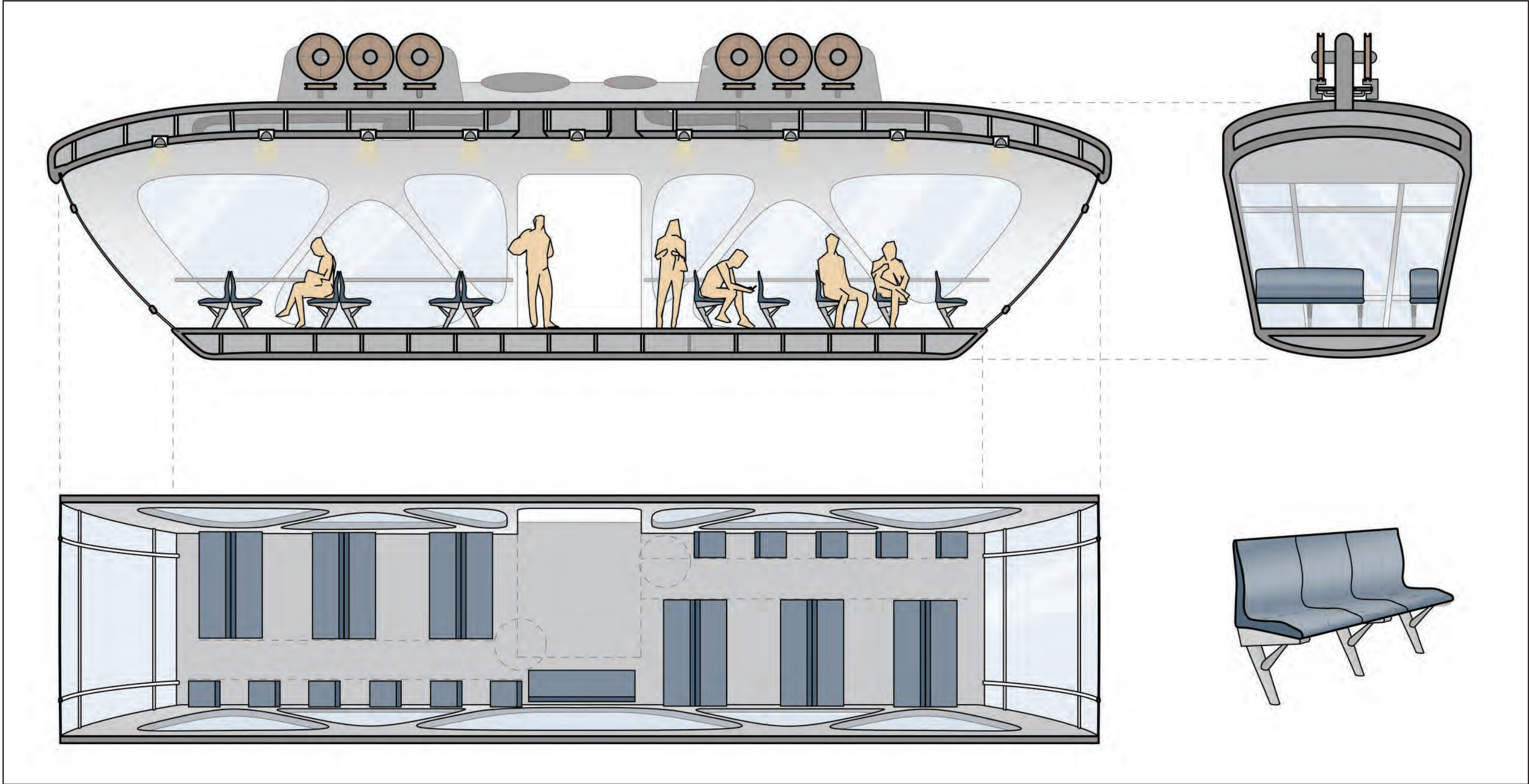


Progress Renders



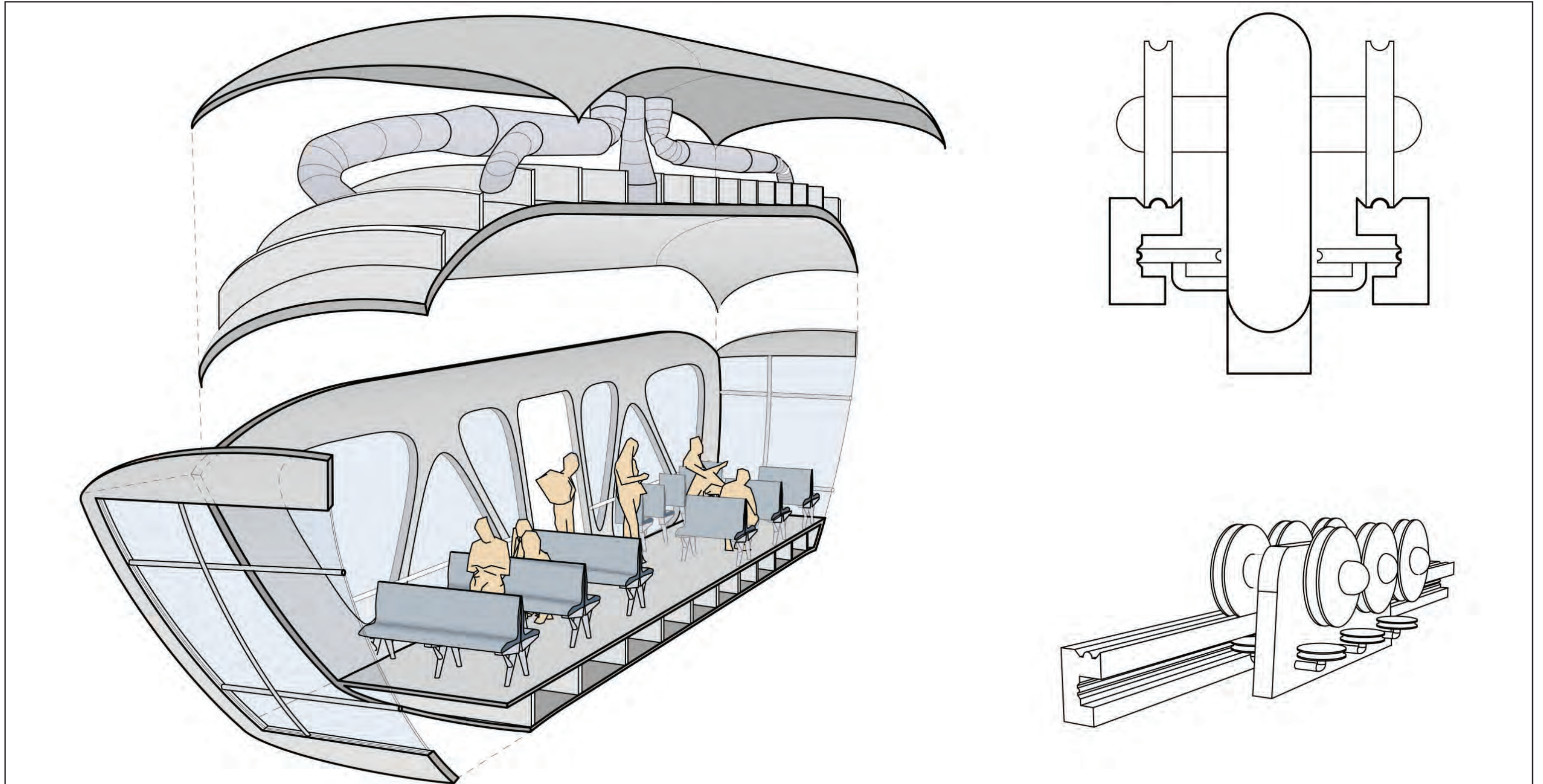
Train Car Plans And Sections

Seating and Circulation



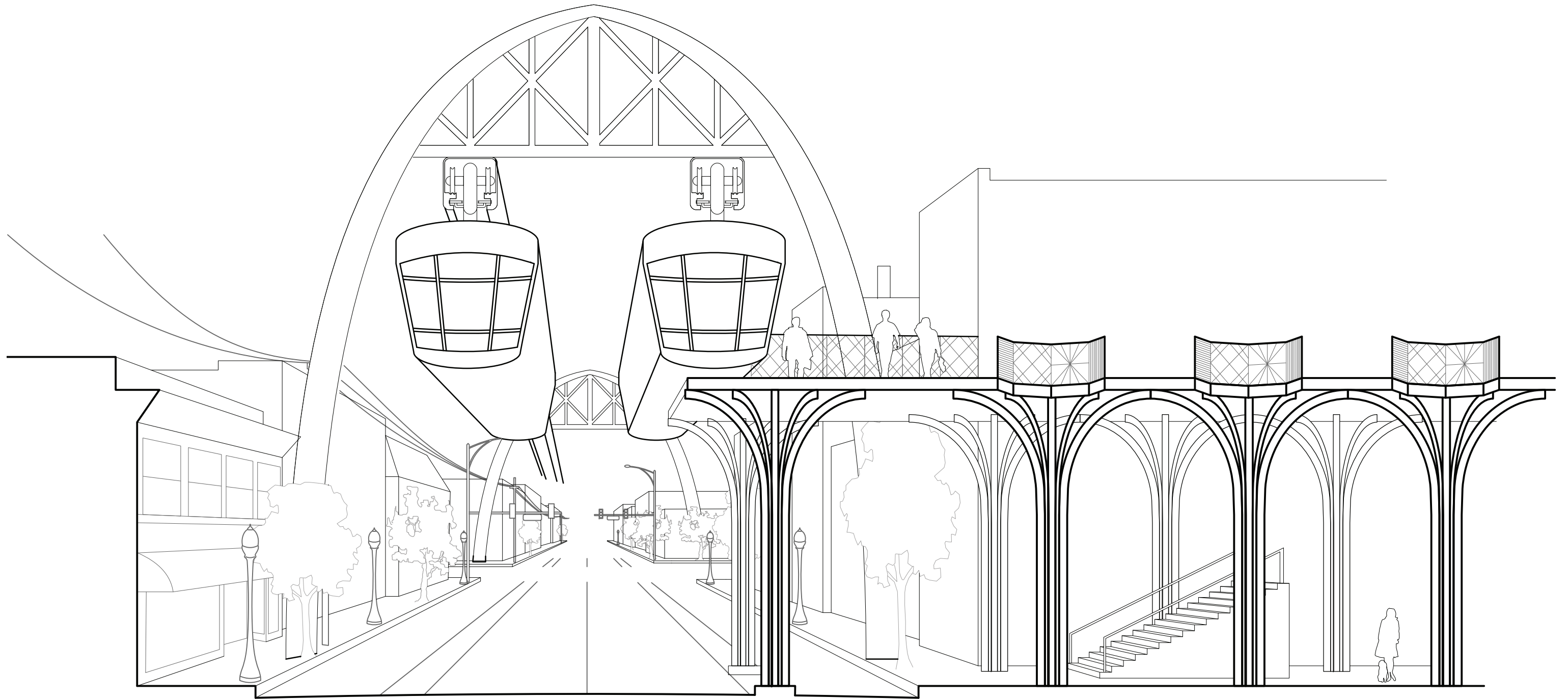
Train Car Mechanics

HVAC and Train Wheels



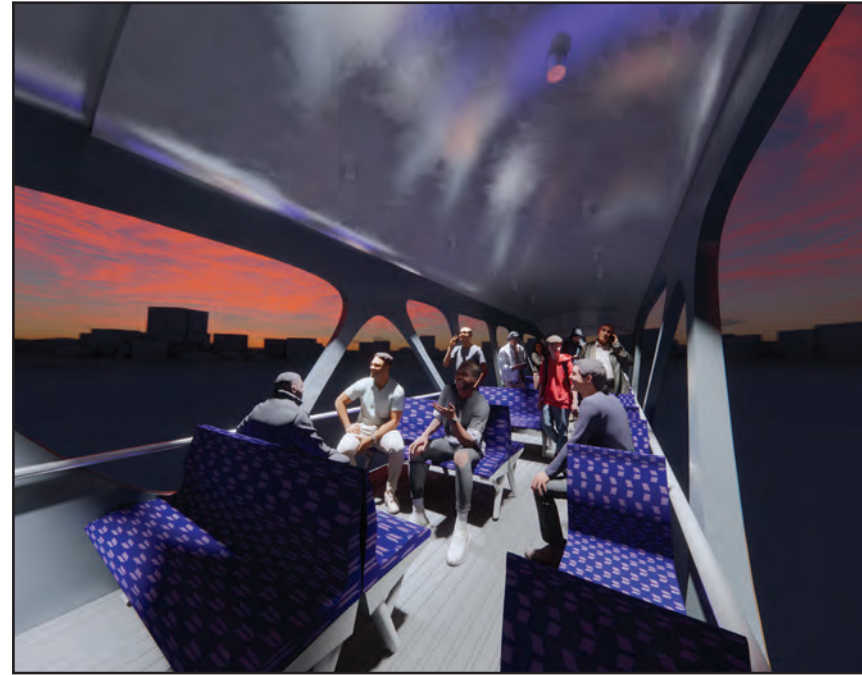
Perspective Section

Station and Street Interaction



Hypothesis

Quality and Quantity



Quality

We are looking into the impacts the monorail will have on the social and cultural divide currently happening due to the heavy impact of the industrial zone. Not only traversing the the gap between communities but also bringing people back to the natural environment which is the river. Our hypothesis is that this will assist in the preparation of the cities overall wellness and wellbeing of the social and cultural atmosphere.

Quantity

We will be examining the impact of ridership on local businesses as measured by the number of transactions over (time period) compared to the existing number of transactions. This will be measured in a double blind test and factoring macroeconomic factors such as CPI inflation for the duration of the test. We expect the SRC will increase foot traffic to businesses in the service area by 40% or more.

